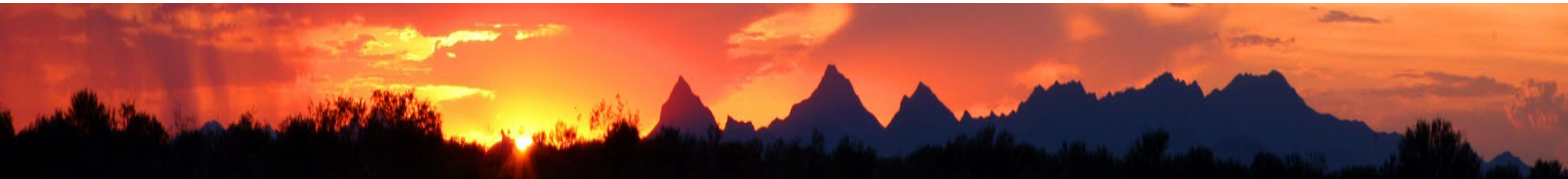


# Overdose Data to Action (OD2A)

- Partnership between Arizona Center for Rural Health (AzCRH), Arizona Department of Health (ADHS) Office of Injury Prevention on the ADHS on the CDC Overdose Data to Action grant.
- Training Community Health Workers/Representatives (CHW/R), students, and other community leaders on substance use, trauma, overdose recognition, and Naloxone administration.



<https://crh.arizona.edu/programs/naloxone>



# PeerWORKS

- BWHET grant, launched in 2022
- Peer Support Specialist  
Apprenticeship Occupation
- Promoting Peer Support in rural primary  
care and integrated health settings

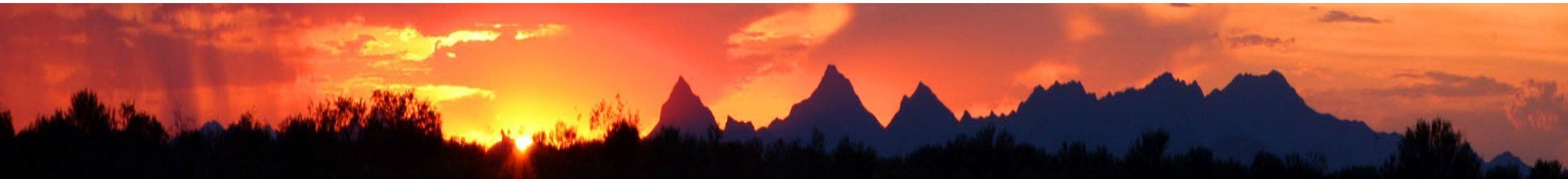


## PeerWORKS

Peer Support Specialist - Behavioral Health Certification and Apprenticeship Program  
Applications for Cohort 2 are closed.

You can join the waiting list for Cohort 3 by submitting your email below

[www.fcm.arizona.edu/outreach/workforce-development-program/peerworks](http://www.fcm.arizona.edu/outreach/workforce-development-program/peerworks)



# Project FUTRE – Family Support

- OIFSP grant, launched in 2021
- Behavioral Health Aide – Parent and Family Support Specialist Apprenticeship Occupation
- Goal to promote Family Support in behavioral health settings

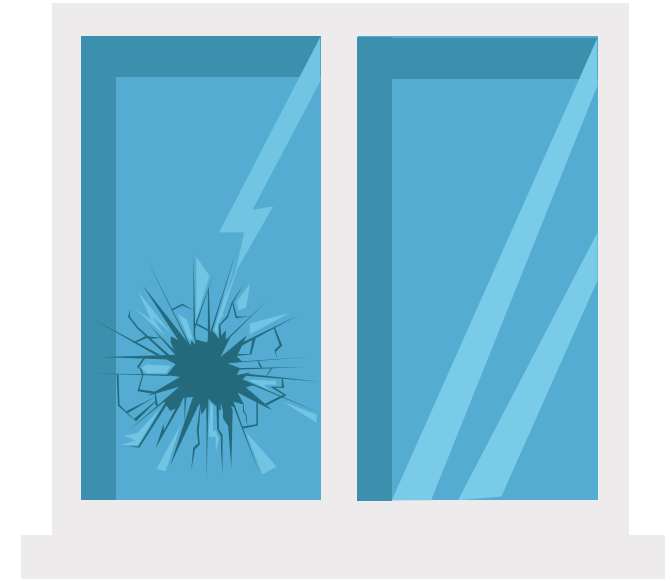
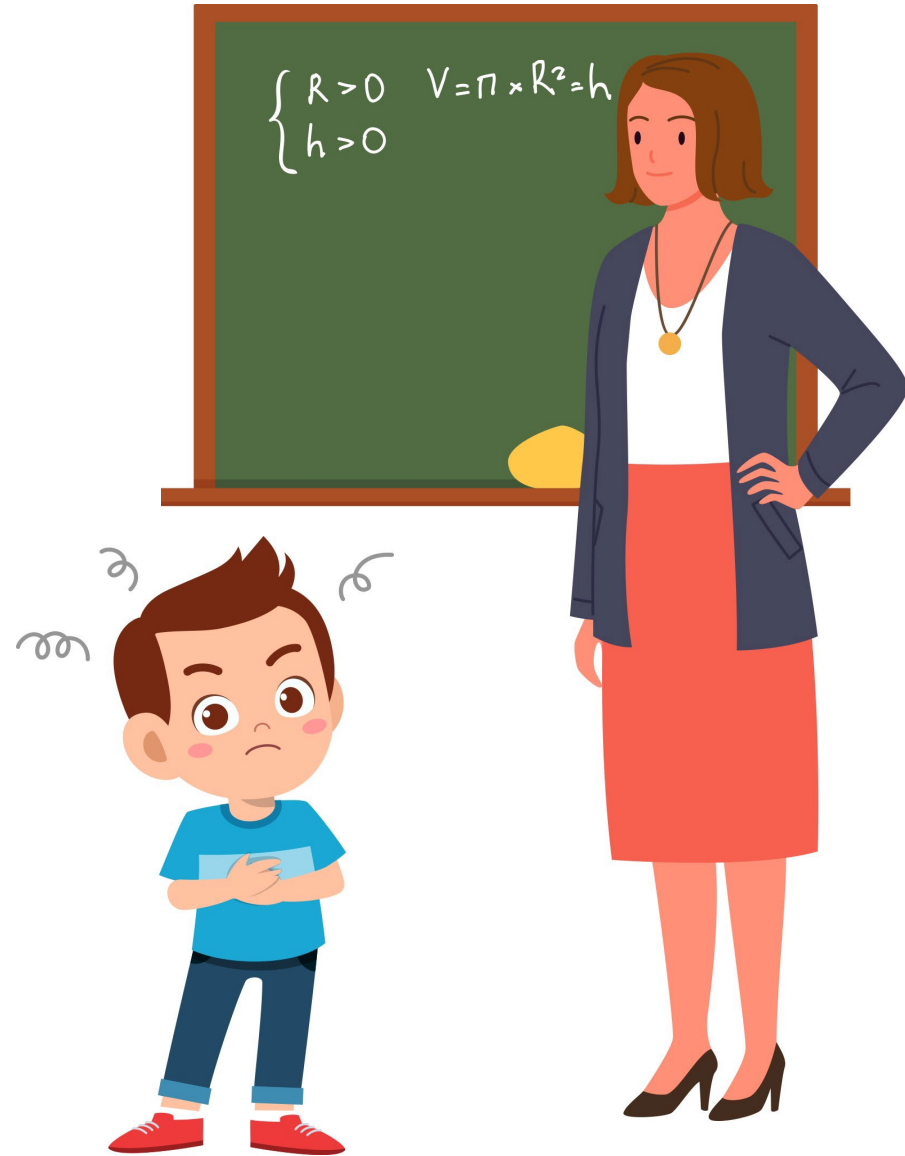
<https://www.fcm.arizona.edu/workforce-development-program/project-futre>





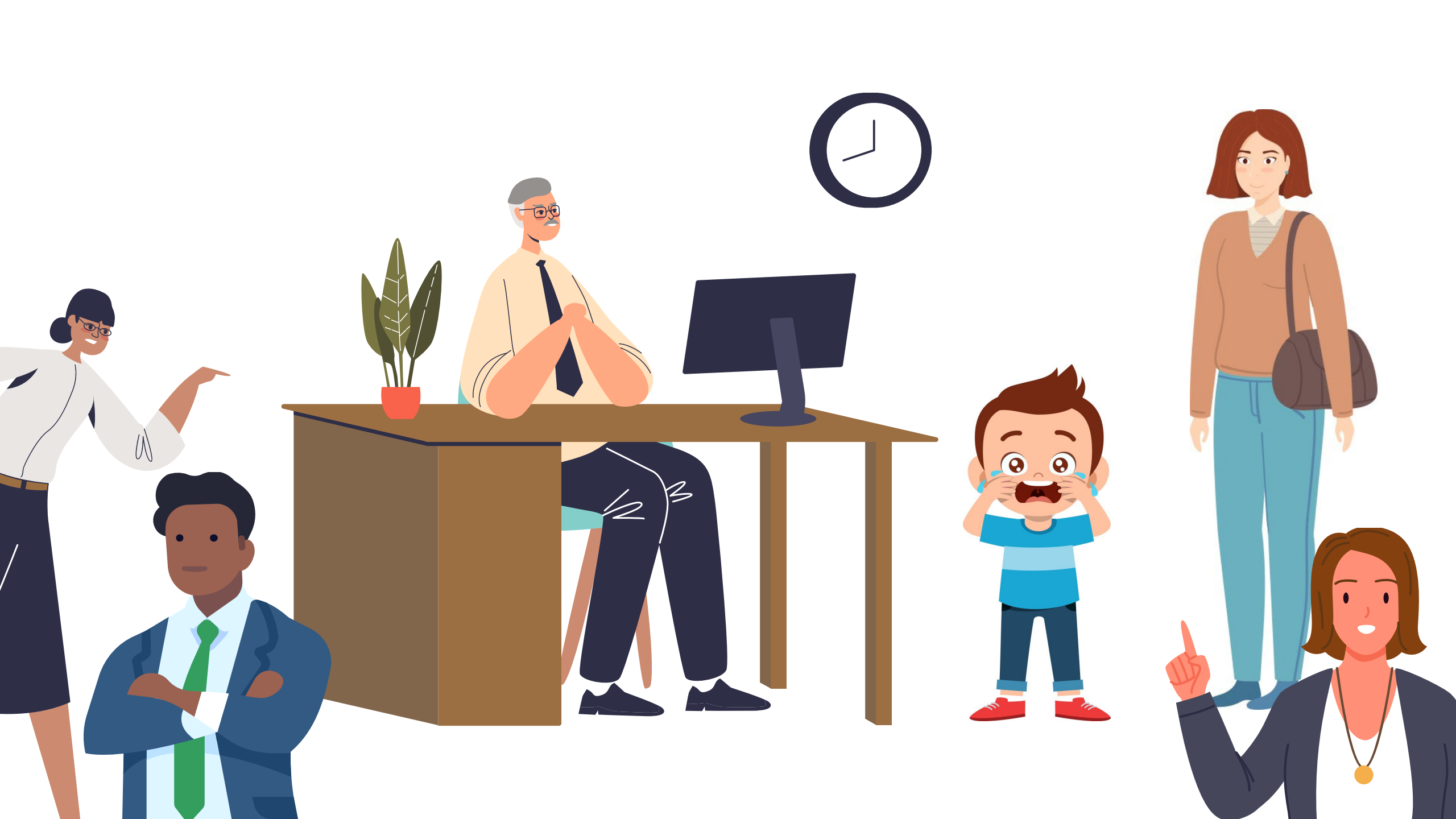






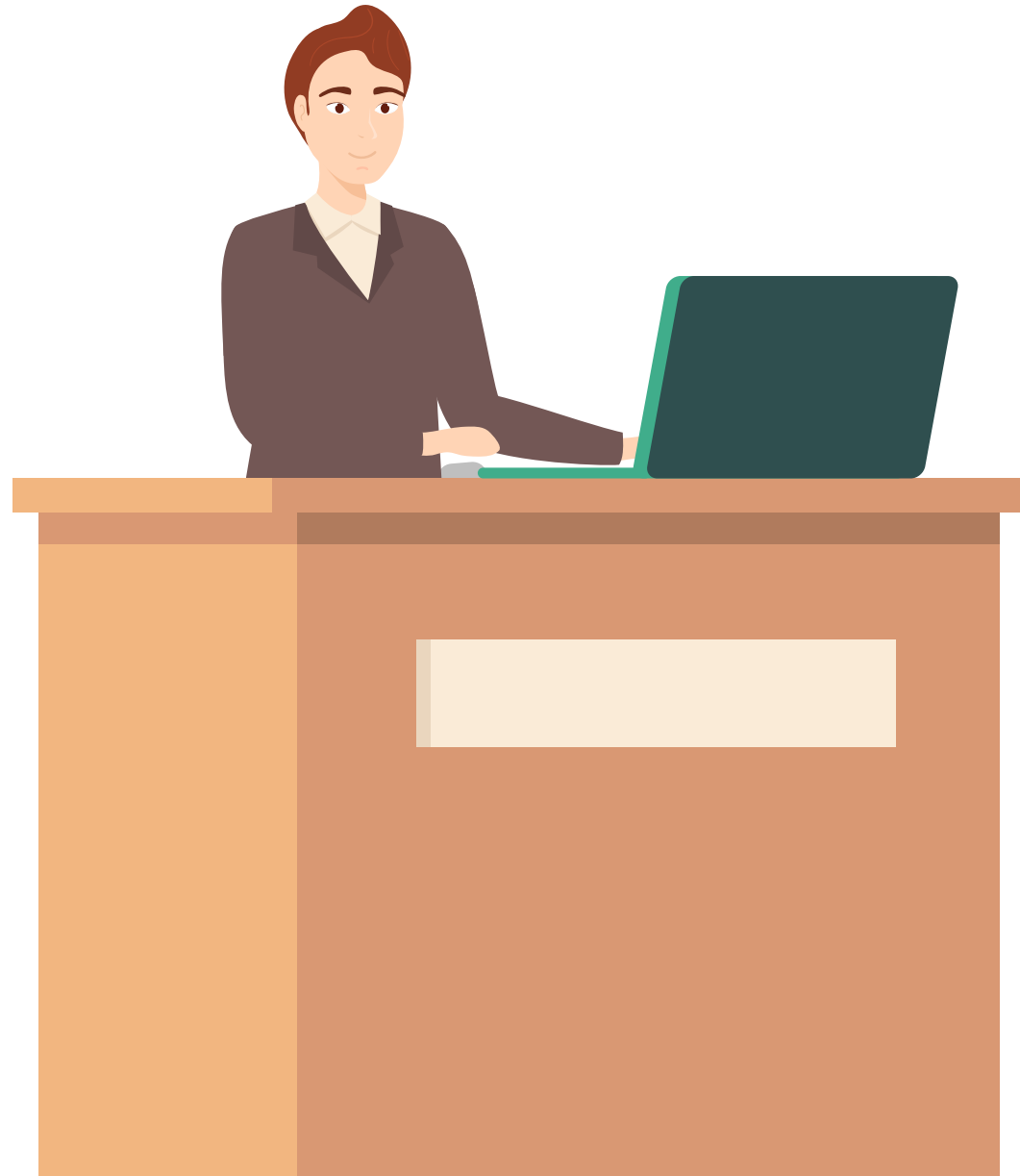












# Questions/Comments

Bianca SantaMaria (**OD2A**)

[biancas@arizona.edu](mailto:biancas@arizona.edu)

Lena Cameron (**PeerWorks/FUTURE**)

[ecameron@arizona.edu](mailto:ecameron@arizona.edu)

Kevin Phillips (**PeerWorks/FUTURE**)

[kevingphillips@arizona.edu](mailto:kevingphillips@arizona.edu)

