



Mel and Enid Zuckerman College of Public Health – Primary Prevention Mobile Health Unit:

Unforeseen Benefits of Unexpected Partnerships

By: Sheila Soto and Martin Zavala

Mission

- Provide access to health and prevention services and promote healthy lifestyle choices to vulnerable, underserved, rural, and homeless communities in Arizona.



Objectives



PROVIDE ACCESS TO HEALTH
AND PREVENTION SERVICES



REFERRALS TO LOCAL CLINICS
(I.E. FQHC)



LAUNCH PREVENTIVE HEALTH
CAMPAIGNS AND PROMOTE
HEALTHY LIFESTYLE CHOICES

Who are we?

- Inter-professional team comprised of Faculty & students from:
 - Public Health
 - Nursing
 - Medicine
- Also:
 - *Promotores de salud* (Community Health Workers)
 - Affiliated partners (FQHC)
 - Pharmacists
 - County & State Health Departments



Services We Provide

Blood Glucose, Blood Pressure, Lipids, Hb A1C, Body Mass Index (BMI)

HIV, Syphilis, & Hepatitis B/C screenings

COVID-19 At-Home Test Distribution

Narcan/Naloxone Distribution

COVID-19, Influenza, and Hep A vaccinations

Referrals for mammograms

Dental Screenings

Fluoride varnish for children

Food Box Distribution

Orientation and education on health insurance, and management of chronic diseases

Referrals to Federally Qualified Health Centers

Active follow-up by Community Health Workers

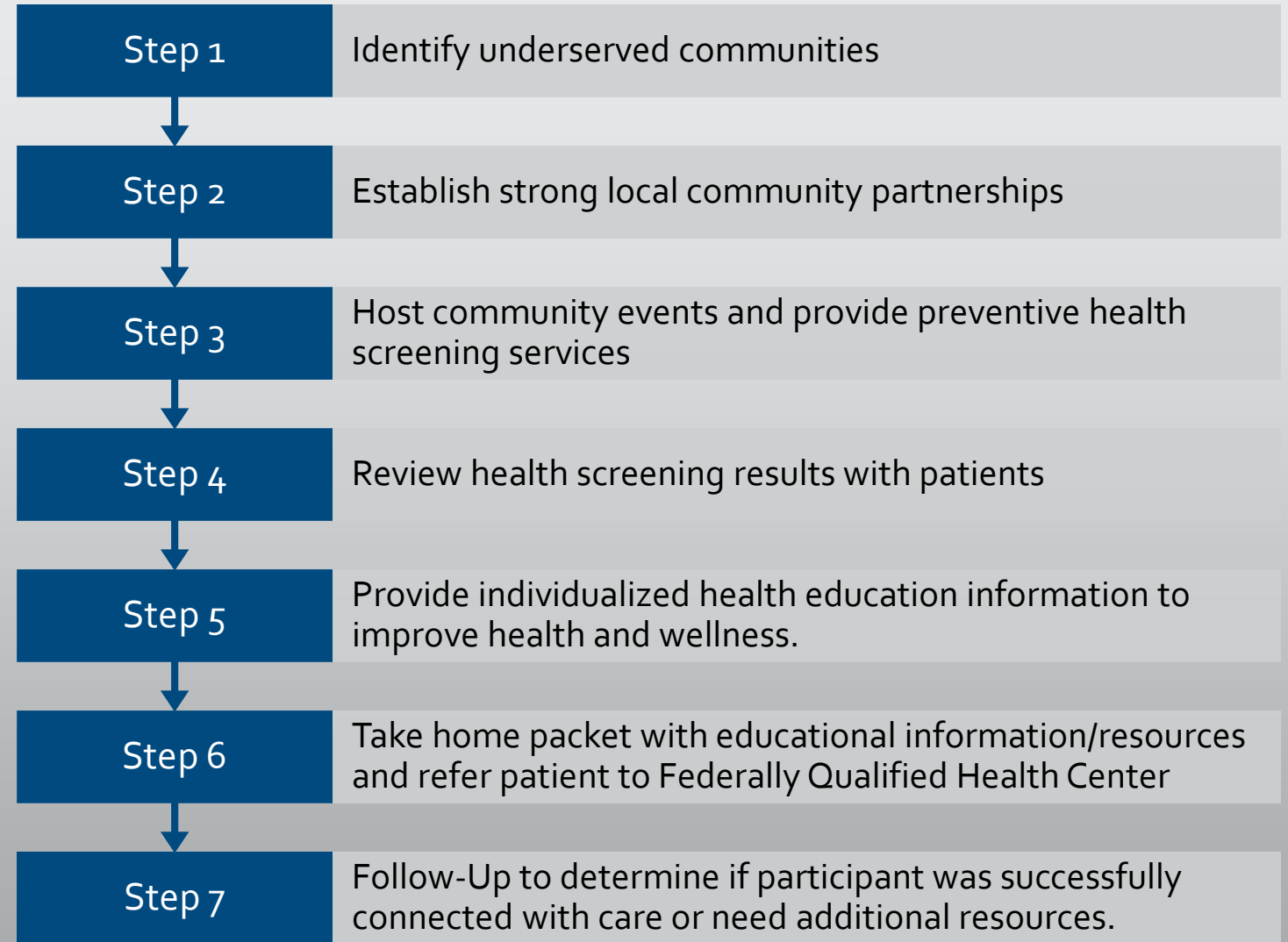


Disease Prevention

- Our goal is to focus on screening and prevention of the following diseases and health risk behaviors:
 1. Cardiovascular disease
 2. Diabetes & Obesity
 3. Tobacco, alcohol & drug abuse
 4. Cancer
 5. Sexually transmitted infections



How It Works



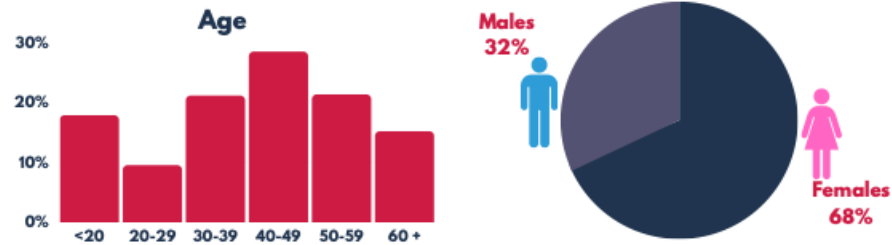
Primary Prevention Mobile Health Unit-Phoenix

January 2016 - May 2022

TOTAL PARTICIPANTS
13,681



SERVICES PROVIDED
64,585



22.3%

**Result with
High Blood
Glucose**



44.7%

**Result with
High Blood
Pressure**



80.6%

**BMI Result:
Overweight
or Obese**

**Monthly Household
Income <\$3000**

82.6%

**Participants with
Health Insurance**

42.4%

(Mainly Emergency AHCCCS)



MEL AND ENID ZUCKERMAN
COLLEGE OF
PUBLIC HEALTH

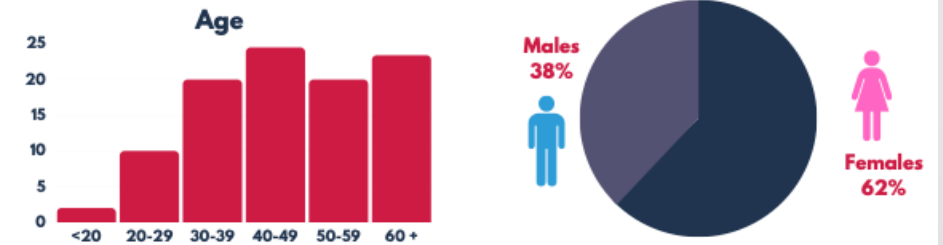
Primary Prevention Mobile Health Unit-Tucson

April 2017 - May 2022

TOTAL PARTICIPANTS
7,957



SERVICES PROVIDED
30,397



49.5%

**Result with
High Blood
Glucose**



55.0%

**Result with
High Blood
Pressure**



78.6%

**BMI Result:
Overweight
or Obese**

**Monthly Household
Income <\$3000**

69.3%

**Participants with
Health Insurance**

62.9%

(Mainly Emergency AHCCCS)



MEL AND ENID ZUCKERMAN
COLLEGE OF
PUBLIC HEALTH

Mobile Outreach Vaccination & Education for Underserved Populations (MOVE- UP)

Primary Prevention Mobile Health Unit

FEBRUARY 03, 2021 TO APRIL 30, 2022

Total Administered: 61,286

13,772
Janssen



11,510
Moderna

36,004
Pfizer

357
SANTA CRUZ, COUNTY

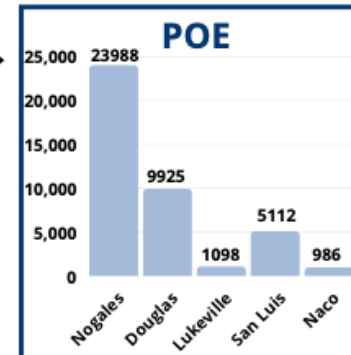
41,109
U.S. PORT OF ENTRY

17,479
MARICOPA, COUNTY

540
PIMA, COUNTY

332
YUMA, COUNTY

1,469
COCHISE, COUNTY



MEL AND ENID ZUCKERMAN
COLLEGE OF
PUBLIC HEALTH



THE UNIVERSITY OF ARIZONA
Arizona AHEC
Area Health Education Centers



MÉXICO
CONSULADO GENERAL EN NOGALES



MÉXICO
CONSULADO EN DOUGLAS



THE UNIVERSITY OF ARIZONA
COLLEGE OF MEDICINE TUCSON
**Family & Community
Medicine**



Strategic Partnerships

- Arizona Department of Health Services
- UA Health Sciences
 - Family & Community Medicine-Tucson
- Local Health Departments [Cochise, Santa Cruz, Pima, Maricopa & Yuma]
- Mexican Consulates [Douglas, Nogales, Tucson, Yuma, Phoenix]
- Binational Forces
 - Employers/Growers
 - Local Health Entities
- Federally Qualified Health Centers
- Trusted Influencers and Stakeholders
 - Community Health Workers
- Customs Border Protection

Central Arizona





MOVE-UP @ the Arizona-Sonora Border

UA MHU &
FCM

Mexican
Consulate

Local Health
Department

CBP

Local
Municipal
Health Office

Local Town
Hall

Local
Universities

Local Enforcement
& Civil Protection

Donation of
Buses

UA Health Science
Faculty, Students,
Volunteers

Mexico Red Cross

Local Organization,
FQHCs







Questions?

- Sheila Soto (Southern Arizona)
Program Manager
 - ssoto2@arizona.edu
- Martin Zavala (Central Arizona)
Clinical Research Coordinator
 - mazp10@arizona.edu
- Alma Ramirez (Central America)
Site Lead
 - almaramirez@arizona.edu