



Arizona MAT Mentors Program (AzMAT Mentors) Definitions and Frequently Asked Questions (FAQs)



Disclaimer: *This program was supported by Grant number H79TI081709 funded by the Substance Abuse and Mental Health Services Administration. Its contents are solely the responsibility of the authors and do not necessarily represent the official views of the Substance Abuse and Mental Health Services Administration or the Department of Health and Human Services.*



Definitions

Term or Acronym	Definition
AzMAT Mentors Program	The Arizona Center for Rural Health, Arizona Medication Assisted Treatment Mentor Program
Collaborators	One-on-one collaborations between: <ul style="list-style-type: none">• Providers with experience implementing MAT = experienced providers. Experience is defined as at least one year using MAT and/or have treated at least 20 patients.• Providers who are DATA-waived with less experience using MAT = new MAT providers. New is defined as anyone who is interested/available to work with an experienced MAT provider.
Collaborative Consultation (CC)	We expect up to five consultations between collaborators to work on a goal towards increasing the new MAT providers capacity to implement substance use disorder services.
OBOT	Office Based Opioid Treatment
OD	Opioid Use Disorder
OTP	Opioid Treatment Programs are accredited and certified to provide services per federal requirements.
Peer support specialists	A person who has substance misuse experience who can support another person while they are becoming stable, in maintenance, and remission.
UDS	Urinalysis drug screening

General FAQs

Q.1: What do collaborative consultations look like?

Please see our project flow on the last page of this document.

The **AzMAT Mentors Program** starts with an orientation. The orientation is 15-30-minutes, for each set of matched providers. The purpose of the orientation is to (a) provide introductions, (b) review new MAT providers priority areas, (c) discuss plan for collaborative consultations (CCs), and (d) schedule five CCs. The focus of the orientation is to identify new MAT provider priority areas and scheduling collaborative consultations.



New and experienced providers may collaborate in a variety of ways, through phone, video conference, in-person, or email. Collaborators should discuss and agree on what communication methods work best for them. This program asks providers to engage in up to five remote collaborative sessions. While not part of the program expectations, we don't have any concerns about additional collaborative consultations which may be in person.

Q.2: Where do I find additional MAT resources?

Here are links to national organizations and federal agency resources.

1. Providers Clinical Support System: <https://pcssnow.org/>
2. Substance Abuse and Mental Health Services Administration: <https://www.samhsa.gov/medication-assisted-treatment>
3. American Society of Addiction Medicine: <https://www.asam.org/>
4. Health and Human Services: <https://www.hhs.gov/opioids/treatment/resources-opioid-treatment-providers/index.html>

Here are links to Arizona and program-specific resources

5. AzMAT Mentors Program resource guide (English & Spanish at the bottom of the page): <https://crh.arizona.edu/mentor>
6. Arizona Department of Health Services Opioid Prevention: <https://www.azdhs.gov/opioid/>
7. Arizona State University MAT: <https://chs.asu.edu/project-echo/join/medications-for-opioid-use-disorder>
8. Opioid Assistance and Referral Line (OARLine): <https://www.azdhs.gov/oarline/>

Do you currently provide MAT to people who have opioid disorders and want to support other providers to do the same?

Consider participating in the AzMAT Mentors Program.

crh.arizona.edu/mentor

THE UNIVERSITY OF ARIZONA
MEL & ENID ZUCKERMAN COLLEGE OF PUBLIC HEALTH
Center for Rural Health

This project was supported by Grant number H79T081709 funded by the Substance Abuse and Mental Health Services Administration. Its contents are solely the responsibility of the authors and do not necessarily represent the official views of the Substance Abuse and Mental Health Services Administration or the Department of Health and Human Services.

Experienced MAT Providers FAQs:

Q.1: How do we (experienced providers) document collaborations?

Please keep a record of your collaborations. At the conclusion of the program, the evaluation survey will ask you to report the total number of collaborative consultations.



Q.2: What are the key program outcomes?

The goal of this program is increase access to MAT services by supporting new or less experienced providers to increase their capacity to deliver MAT services. We will measure this through changes in their confidence and their intention to deliver MAT.

Q.3: How did AzMAT Mentors program staff recruit the new MAT providers?

All Arizona controlled substance prescribers who have experience offering MAT are encouraged to participate, especially those working in rural and underserved areas (see definitions above). To spread the word, we used a variety of marketing methods, such as email listservs, professional presentations, direct to provider/organization engagement, and word-of-mouth. Please feel free to invite interested providers to complete our interest and other forms at our website crh.arizona.edu/mentor.

Q.4: When do we get paid?

The process for payment includes:

- ✓ Completing the Scope of Service, Independent Contractor (ICON) form, and financial service documents
- ✓ Viewing the training modules
- ✓ Working with assigned collaborator(s) and completing up to five collaborative consultations for each match
- ✓ Submitting an invoice using the AzMAT Mentor Program template
- ✓ Awaiting four to eight weeks to receive payment
- ✓ Questions should be directed to: AzMAT Mentors at MAT-Mentors@arizona.edu

Q.6: What is an ICON?

ICON stands for Independent Contractor form used by the University of Arizona as a mechanism to pay providers for their time as experienced MAT providers in the program. More information about ICON forms and policies are located at this website: <https://www.fso.arizona.edu/accounts-payable/independent-contractor>.

Q.7: Where can I find instructions or support to complete the ICON form?

An email with a template will be sent to you explaining the ICON process. This document will be sent to you via Adobe Sign. Adobe Sign will prompt you to complete the appropriate fields, check over the document for accuracy, and submit. You will be able to reach AzMAT Mentors at MAT-Mentors@arizona.edu for additional troubleshooting.



**Consider collaborating with an experienced
MAT provider to get 1:1 support in
implementing MAT services.**



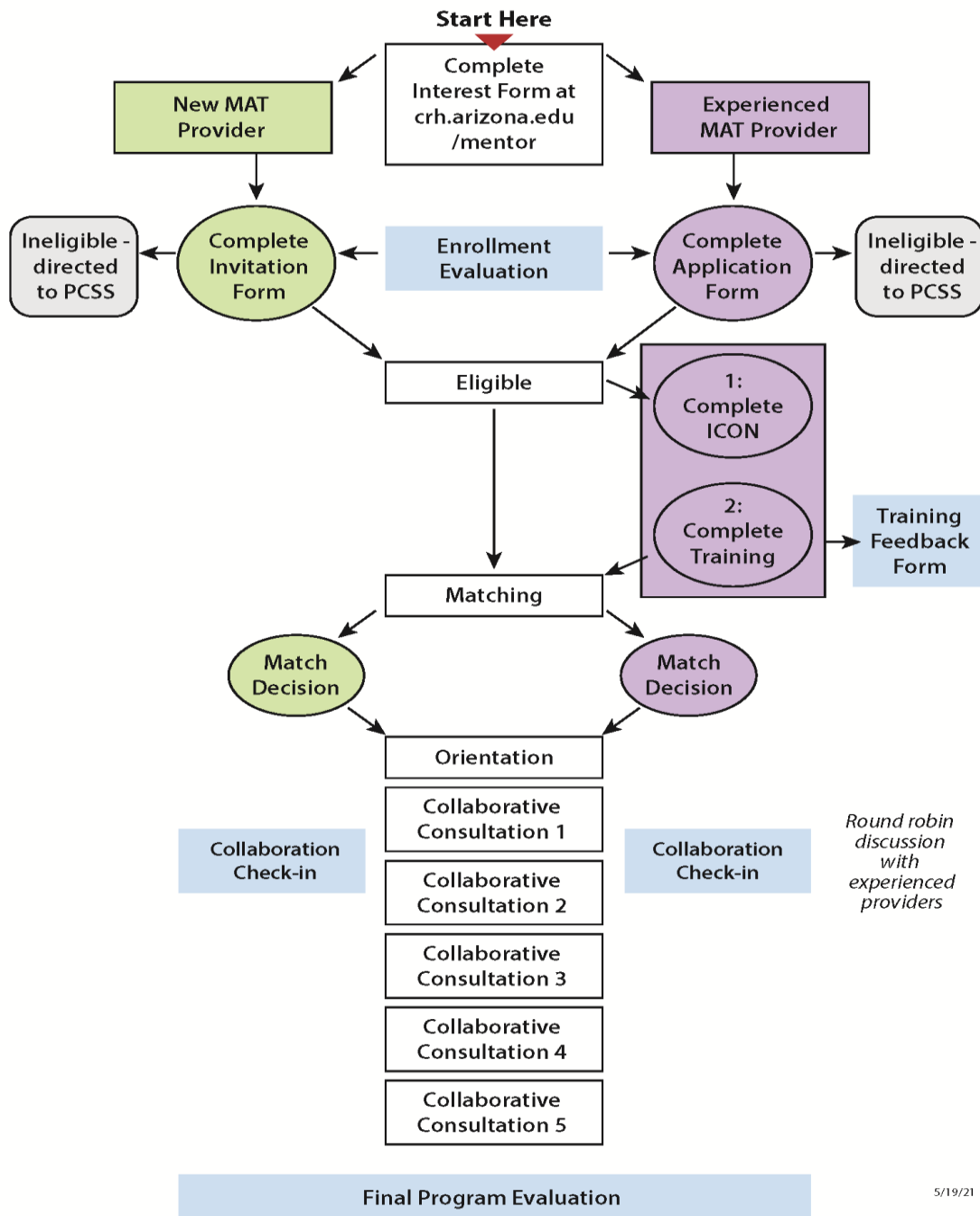
New MAT Providers FAQs:

Q.1: May I request a specific experienced MAT provider to be matched with?

Yes. You will be provided a link to a non-public website. Listed will be the experienced providers who are part of our program and have not reached their assignment capacity (up to three mentees per mentor). If there is someone else you are interested in working with, please send us an email and we will determine if it's feasible to connect you. Please contact us at MAT-Mentors@arizona.edu



Project Flow:



5/19/21



THE UNIVERSITY OF ARIZONA
MEL & ENID ZUCKERMAN COLLEGE OF PUBLIC HEALTH

Center for Rural Health

Roy P Drachman Hall
1295 N Martin Avenue
P.O. Box 245177
Tucson, AZ 85724-5177
Tel: (520) 626-5823
www.crh.arizona.edu

Arizona MAT Mentors Program (AzMAT Mentors) Definiciones y Preguntas Frecuentes



Disclaimer: This program was supported by Grant number H79TI081709 funded by the Substance Abuse and Mental Health Services Administration. Its contents are solely the responsibility of the authors and do not necessarily represent the official views of the Substance Abuse and Mental Health Services Administration or the Department of Health and Human Services.



Definiciones

Term or Acronym	Definition
AzMAT Mentors Program	The Arizona Center for Rural Health, Arizona Medication Assisted Treatment Mentor Program
Colaboradores	Colaboraciones uno a uno entre: <ul style="list-style-type: none">• Proveedores con experiencia en la implementación de MAT = proveedores experimentados. La experiencia se define como tener al menos un año implementando MAT y/o haber tratado al menos a 20 pacientes.• Proveedores que tienen un DATA-waiver con menos experiencia en el uso de MAT = nuevos proveedores de MAT. Nuevo se definen como cualquier persona que esté interesada / disponible para trabajar con un proveedor de MAT experimentado.
Consulta colaborativa (CC)	Esperamos hasta cinco consultas entre colaboradores para trabajar en un objetivo hacia el aumento de la capacidad de los nuevos proveedores de MAT para implementar servicios de trastornos por uso de sustancias.
OBOT	Office Based Opioid Treatment (Tratamiento con opioides en el consultorio)
ODU	Opioid Use Disorder (Trastorno de opioides)
OTP	Opioid Treatment Programs are accredited and certified to provide services per federal requirements. (Los programas de tratamiento de opioides están acreditados y certificados para proporcionar servicios según los requisitos federales.)
Especialistas en apoyo entre pares	Una persona que tiene experiencia en el uso indebido de sustancias que puede apoyar a otra persona mientras se está estabilizando, en mantenimiento y remisión.
UDS	Urinalysis drug screening (Examen de detección de drogas con análisis de orina)

Preguntas frecuentes

P.1: ¿Cómo son las consultas colaborativas?

Consulte nuestro flujo de proyectos en la última página de este documento.

El **AzMAT Mentors Program** comienza con una orientación. La orientación es de 15-30 minutos, para cada conjunto de proveedores. El propósito de la orientación es (a) introducir, (b) revisar las áreas prioritarias del nuevo proveedor de MAT, (c) discutir el plan para consultas colaborativas (CC) y (d) programar cinco CC. El enfoque de la orientación es identificar nuevas áreas prioritarias de proveedores de MAT y programar consultas colaborativas.



Los proveedores nuevos y experimentados pueden colaborar de varias maneras, a través del teléfono, videoconferencia, en persona o correo electrónico. Los colaboradores deben discutir qué métodos de comunicación funcionan mejor para ellos. Este programa pide a los proveedores que participen en cinco sesiones de colaboración. No es una expectativa del programa tener consultas colaborativas adicionales, pero si los dos proveedores quisieran tener más consultas, son bienvenidos.

P.2: ¿Dónde puedo encontrar recursos de MAT adicionales?

Aquí hay enlaces a organizaciones nacionales y recursos de agencias federales.

1. Providers Clinical Support System: <https://pcssnow.org/>
2. Substance Abuse and Mental Health Services Administration: <https://www.samhsa.gov/medication-assisted-treatment>
3. American Society of Addiction Medicine: <https://www.asam.org/>
4. Health and Human Services: <https://www.hhs.gov/opioids/treatment/resources-opioid-treatment-providers/index.html>

Aquí hay enlaces a Arizona y recursos específicos del programa

1. El Guía de Recursos del AzMAT Mentors Program (Inglés y español en la parte inferior de la página): <https://crh.arizona.edu/mentor>
2. Arizona Department of Health Services Opioid Prevention: <https://www.azdhs.gov/opioid/>
3. Arizona State University MAT: <https://chs.asu.edu/project-echo/join/medications-for-opioid-use-disorder>
4. Opioid Assistance and Referral Line (OARLine): <https://www.azdhs.gov/oarline/>

¿Actualmente proporciona MAT a personas que tienen trastornos opioides y quieren apoyar a otros proveedores para que hagan lo mismo? Considere participar en el AzMAT Mentors Program.
crh.arizona.edu/mentor



Preguntas frecuentes sobre proveedores de MAT con experiencia:

P.1: ¿Cómo documentamos las colaboraciones?

Please keep a record of your collaborations. At the conclusion of the program, the evaluation survey will ask you to report the total number of collaborative consultations.



P.2: ¿Cuáles son los resultados del programa?

El objetivo de este programa es aumentar el acceso a los servicios de MAT mediante el apoyo a proveedores nuevos o menos experimentados para aumentar su capacidad de prestar servicios de MAT. Mediremos esto a través de cambios en su confianza y su intención de implementar MAT.

P.3: ¿Cómo recluta el programa de AzMAT Mentors a los nuevos proveedores de MAT?

Todos los proveedores en Arizona que están interesados son alentados a participar, especialmente aquellos que trabajan en áreas rurales. Para difundir nuestro programa, utilizamos una variedad de métodos de marketing. Esos métodos incluyen: conectar por medio de correo electrónico, presentaciones profesionales, participación directa con el proveedor y por el boca a boca. Si se le ofrece, puede invitar a los proveedores interesados a completar nuestro formulario de interés en nuestro sitio web crh.arizona.edu/mentor.

P.4: ¿Cuándo nos pagan?

El proceso de pago incluye:

- Completando el “Scope of Service and Independent Contractor (ICON)” formulario
- Leer los módulos de formación y ver nuestros “roundtable sessions” (opcional)
- Trabajar con los colaboradores asignados y completar cinco consultas colaborativas
- Envío de una factura usando la plantilla del AzMAT Mentor Program
- Esperando entre cuatro o ocho semanas para recibir el pago
- Las preguntas deben dirigirse a AzMAT Mentors en MAT-Mentors@arizona.edu

P.6: ¿Qué es un ICON?

ICON se significa “Independent Contractor” que es un formulario utilizado por la Universidad de Arizona como un mecanismo para pagar a los proveedores por su tiempo como proveedores experimentados en MAT entre el programa. Más información sobre los formularios y políticas de ICON se encuentran en este sitio web: <https://www.fso.arizona.edu/accounts-payable/independent-contractor>.

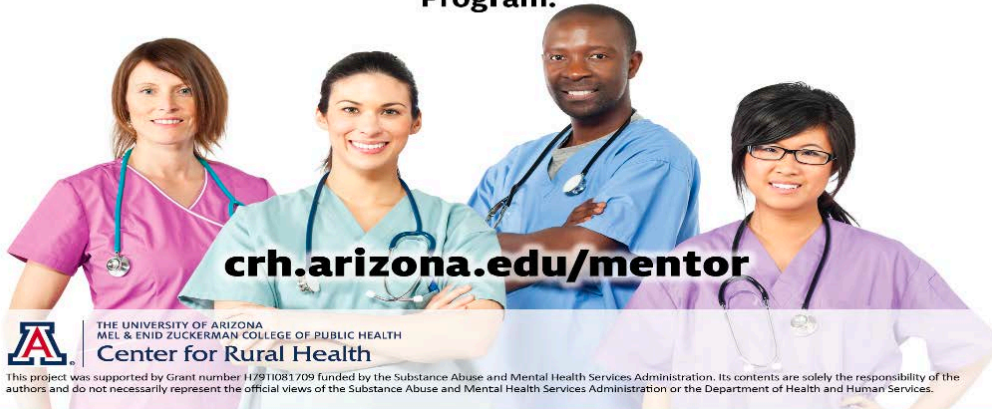
P.7: ¿Dónde puedo encontrar instrucciones o asistencia para completar el formulario de ICON?

Se le enviará un correo electrónico con una plantilla explicando el proceso ICON. Este documento se le enviará a través de Adobe Sign. Adobe Sign le pedirá que complete los campos correspondientes, compruebe la exactitud del documento y lo podrá enviar. Podrás contactar a AzMAT Mentors en MAT-Mentors@arizona.edu para una solución de problemas adicional.



¿Está interesado en colaborar con un proveedor de MAT con experiencia para ofrecer MAT?

► **Complete un formulario de interés para el AzMAT Mentors Program.**



Preguntas frecuentes que tienen los nuevos proveedores de MAT:

P.1: ¿Puedo solicitar que me empareje con un proveedor de MAT con experiencia específico?

Sí. Si tiene un proveedor de MAT experimentado con el que le gustaría colaborar, haremos todo lo posible para acomodarlo. Los proveedores de MAT con experiencia deben completar los formularios de interés y solicitud y no se les debe asignar un número de nuevos proveedores.

Diagrama de flujo del proyecto
(página siguiente)

